



**MATERA**

# INFORMATIONS

---

**MATERA** is an 8 outputs isolator module ideal for pedal effects. It has four outputs with the possibility of selecting 9 or 12Vdc and one for 9 or 18Vdc with a maximum current of 125mA. It also offers three additional 12Vdc at full power outputs. The circuit is well cared for in order to create a clean and stabilized power supply.

A unique peculiarity is the narrow and compact shape with the possibility of being connected to the external power supply indifferently from the right or left connector and linkable with other modules. **MATERA** must be powered by a 12Vdc 3000mA desktop power supply in order to guarantee the necessary current to the module or to multiple modules if connected together.

The circuit that generates the current isolation complies with EMI standards and works on frequencies that do not generate audio noise. The current values that we declare are to be considered "for continuous use".

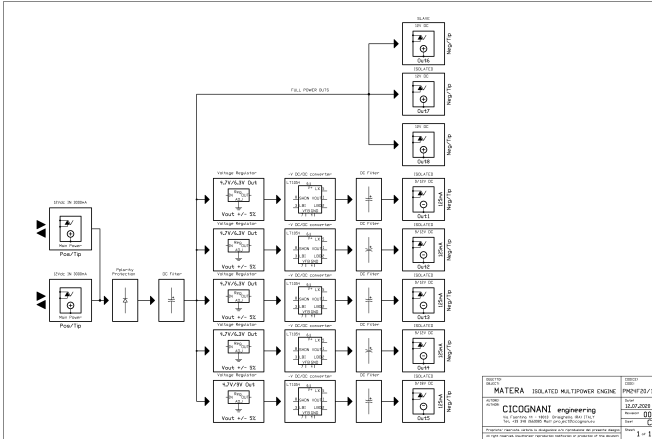
We have chosen a narrow and elongated circuit shape so that it can be installed in small or large pedalboards. The circuit, strictly with traditional quality components (no SMD), has been engineered at the highest levels and guarantees (with life test) a continuous use keeping the working temperatures contained.

External power supply. We recommend a 12Vdc 2500/3000mA desktop power supply. This device can be replaced if several modules are used with power supplies that generate more current.

**MATERA** can be installed in your pedal board with the adhesive streep tape or by screw fixing.

DESIGNED AND HAND-BUILT IN ITALY

# BLOCK SCHEMATIC



The diagram illustrates the internal circuitry of the CICOGNANI MATERA 12Vdc MAIN PWR unit. It features a 12Vdc input, a 12Vdc output, and a 12Vdc output. The unit is designed for 12Vdc operation and includes a 12Vdc output. The output is labeled 12Vdc 1000mA MAX. The unit is designed for 12Vdc operation and includes a 12Vdc output. The output is labeled 12Vdc 1000mA MAX.

**HI POWER**

**LOW POWER**

**MID POWER**

# SPECIFICATIONS

---

|                             |                                |
|-----------------------------|--------------------------------|
| Main Power In               | 12VDC - 2500/3000mA            |
| Main Power Slave            | 12VDC - 2500/3000mA            |
| Outs 1-2-3-4                | 9 or 12Vdc 125mA               |
| Outs 5                      | 9 or 18Vdc 125mA               |
| Outs 6-7-8                  | 12Vdc (Neg. tip) Full Pwr      |
| Insulators Efficiency       | Up to 90°                      |
| Insulator Frequency Clock   | Up to 25Khz                    |
| Noise                       | No ripple into outs            |
| Working Temperature         | 0 to 60°C - MAX 40 to 80°C     |
| Standby Current Consumption | 330mA - 3,96W                  |
| Dimensions                  | 45x233x38mm (1.77"x9.17"x1.6") |
| Weight                      | 280gr (0.61lbs)                |

\*Main Pwr In/Main Pwr Slave: connection DC2.1 Positive tip

\*\*Outs 1-2-3-4-5: Negative tip, programmable by multi-switch

**CICOGNANI ENGINEERING** reserves the right to modify the technical characteristics and layout of the products at any time and without notice. This product is built to the rule of art and observes the technical requirements of the Directives Europee 89/366EEC.

# GURU ADVISES

---

1. Place and fix **MATERA** in your pedal board. Use the streep tape if you want it to be easily removable or you can fix it “stable” with 3mm diameter screws.
2. Using the dip switch setting, select the desired voltage value of the outputs.
3. Connect the outputs to the main pedals power with hi quality cables that have DC2.1 type connectors.
4. Connect the high power outputs to the 12Vdc pedals with a current greater than 125mA.
5. Connect the main power supply to the **MATERA** module, making sure that the connection is positive tip.
6. If you use multiple modules, simply connect them together via a DC2.1 cable as indicated by the main power IN / OUT arrows located at the ends of the front panel.
7. Now if you have already checked your connections, you are ready to connect the main external power supply and give power to the pedalboard.

# WARRANTY TERMS

---

The guarantee of the products is two years from the purchase data. Switches, buttons, relays are one year. The thermionic valves, indicator lights, wiring cables are guaranteed for three months.

Responsibility of **CICOGNANI ENGINEERING** is limited to repair or replacement of the product at our discretion.

**CICOGNANI ENGINEERING** not be liable for damages resulting from loss of use of the product, lost time operation interrupted by non-use, loss of business or any other damages or incidental, consequential or otherwise; damage in transit or damage caused by inadequate packaging.

**How to receive assistance:** Send an email to [sales@cicognani.eu](mailto:sales@cicognani.eu) in order to make agreements on how and where to send the product. The product must be sent together with a copy of the receipt/sales receipt. Shipping and packing costs are the responsibility of the purchaser.

**THE WARRANTY IS NOT VALID WITHOUT A COPY OF YOUR RECEIPT OF SALE CERTIFYING THE DATE OF PURCHASE.**





**CICOGNANI ENGINEERING**

Via Faentina, 44 - 48013 Brisighella (RA), Italy P.Iva: 02720280391