



CPS SWITCH MKII

INFORMATIONS

CPS SWITCH MKII is a professional stable footswitch with off light (green LED) and on (red LED). This product houses an internal battery (not included) to allow light signals. It's compatible for changing channels of amplifiers or functions of devices that require only one function.

Small size, strong and of good quality **CPS SWITCH MKII** is born to be used on all those products that need an external foot switch of the stable contact type (example Brutus, CPS100, 5018 Amplifier). The internal battery thanks to the very low consumption of LEDs has a long life.

At the end of use disconnect the connection cable to switch off the device.

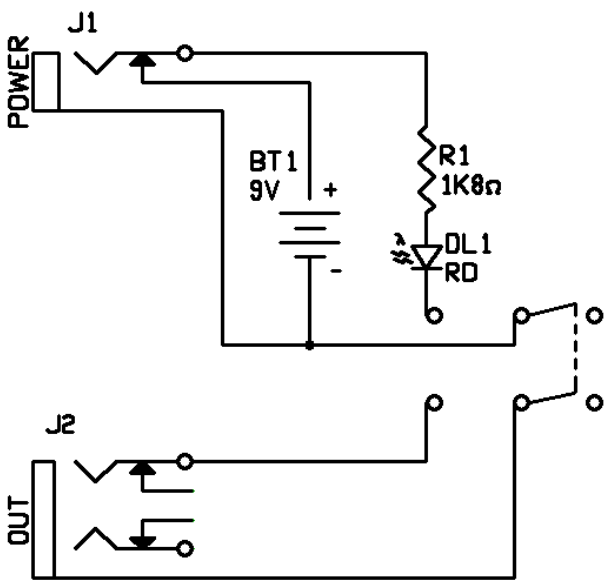
CONNECTIONS

The connection is a 6.3mm mono jack type. (TS)



DESIGNED AND HAND-BUILT IN ITALY

SCHEMATIC



SPECIFICATIONS

Battery Type	9V (6LR61)
Consumption	MAX 8mA
Out	OFF/ON STABLE
Out Connection	Jack Mono 6,3mm
Switch Type	DPDT GOLD PIN
Weight	0,2Kg (0.44 lbs)
Width	60mm (2.4")
Lenght	112mm (4.4")

CICOGNANI ENGINEERING reserves the right to modify the technical characteristics and layout of the products at any time and without notice. This product is built to the rule of art and observes the technical requirements of the Directives Europee 89/366EEC.

GURU ADVISES

1. Use good quality cables.
2. Avoid keeping the battery inside when not in use.

The new **CPS SWITCH MKII** version in addition to a renewed design is wired point to point and includes the possibility of powering the pedal from outside.

Power request 9-12V max 10mA with negative connection tip.

WARRANTY TERMS

The guarantee of the products is two years from the purchase data. Switches, buttons, relays are one year. The thermionic valves, indicator lights, wiring cables are guaranteed for three months.

Responsibility of **CICOGNANI ENGINEERING** is limited to repair or replacement of the product at our discretion.

CICOGNANI ENGINEERING not be liable for damages resulting from loss of use of the product, lost time operation interrupted by non-use, loss of business or any other damages or incidental, consequential or otherwise; damage in transit or damage caused by inadequate packaging.

How to receive assistance: Send an email to sales@cicognani.eu in order to make agreements on how and where to send the product. The product must be sent together with a copy of the receipt/sales receipt. Shipping and packing costs are the responsibility of the purchaser.

THE WARRANTY IS NOT VALID WITHOUT A COPY OF YOUR RECEIPT OF SALE CERTIFYING THE DATE OF PURCHASE.





CICOGNANI ENGINEERING

Via Faentina, 44 - 48013 Brisighella (RA), Italy P.Iva: 02720280391